

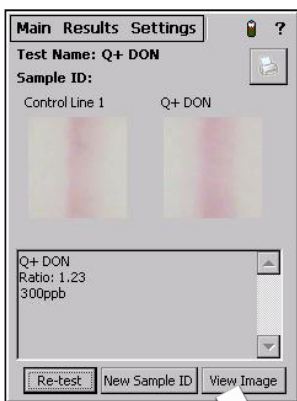
Reveal Q+

for DON



Quantifiably Better.

Neogen introduces **Reveal Q+ for DON**, an easy-to-use, rapid, quantitative lateral flow test that provides unparalleled accuracy in only 3 minutes. Reveal Q+ for DON is the product of Neogen's innovative technology which yields accurate and reproducible quantitative results.

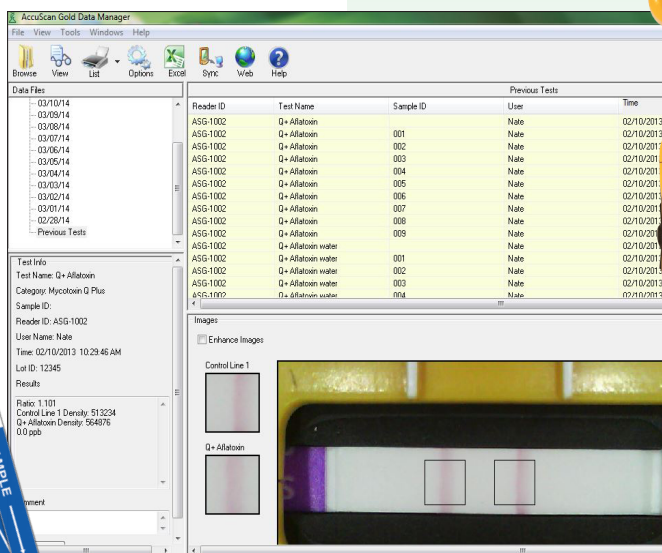
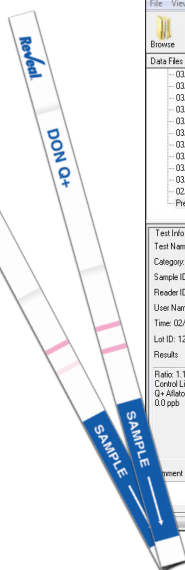


Neogen's innovative technology which yields accurate and reproducible quantitative results.

Advantages add up with Reveal Q+

- + USDA-GIPSA approved
- + Unmatched accuracy and reproducibility
- + Quantitative results, 300-6000 ppb
- + Minimal training required
- + The best technical and R&D support in the industry

- + **Simple** water extraction
- + **Fast** time to result
- + **Easy-to-use**



To place an order, or for more information, contact your local Neogen Europe representative, or visit our web site at www.neogeneurope.com

Noack & Co. GmbH • www.noackgroup.com • diagnostics@noackgroup.com



Reveal Q+ for DON Procedure

Note: Please read kit instructions completely before performing test.



1. Prepare by entering the QR code into the Reveal AccuScan® Gold reader.



2. Obtain a representative sample. Grind and weigh out a 10 g sample.



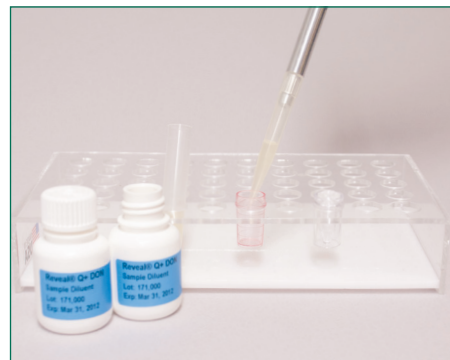
3. Add 100 mL of distilled or deionised water to sample.



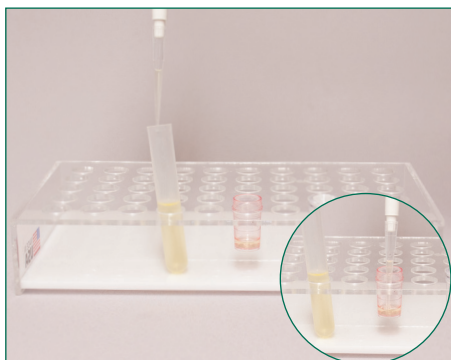
4. Shake vigorously for 3 minutes, or blend for 1 minute.



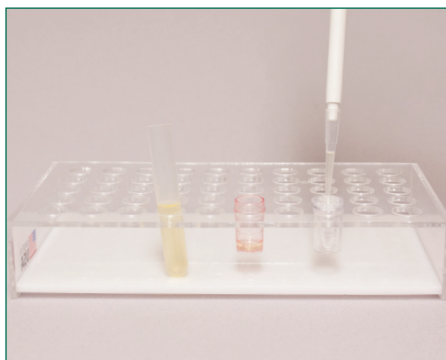
5. Settle, then filter.



6. Add 1000 µL of sample diluent to red dilution cup.



7. Add 100 µL sample extract to red dilution cup and mix up and down 5 times.



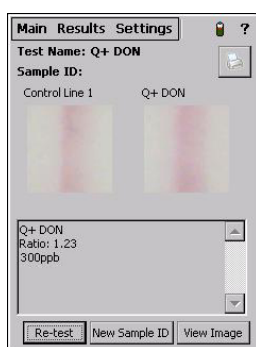
8. Transfer 100 µL to sample cup.



9. Place a new Reveal Q+ DON strip into the sample cup. Set a timer for 3 minutes.



10. Remove promptly at 3 minutes and interpret results using the Reveal AccuScan Gold reader.



Results shown on the AccuScan Gold reader.

#8385 Reveal Q+ for DON

Threshold: 300-6000 ppb

Testing time: 3 minutes

Materials Provided

25 test strips

25 sample cups

25 red dilution cups

2 bottles of sample diluent

Kit instructions

Materials Available from Neogen

Grinder (#9401, 9453)

Scale (#9427)

Sample collection cups w/lids (#9428)

Filter syringe (#9420)

Reveal sample cup rack (#9475)

Reveal AccuScan Gold Reader (#9595)

Sample collection tubes with caps (#9421)

Timer (#9452)

Dispensing pump or graduated cylinder (#9448, 9447)

Pipettor, 100 µL (#9272, 9860)

Pipettor tips, 100 µL (#9407, 9410, 9417)

Pipettor, 1000 µL (#9337)

Pipettor tips, 200–1000 µL (#9464, 9487)

To place an order, or for more information, contact your local Neogen Europe representative, or visit our web site at www.neogeneurope.com

Noack & Co. GmbH • www.noackgroup.com • diagnostics@noackgroup.com

